

DRAGON DG-150

The Sleek High Performance Bezel-Free POS Terminal

DRAGON DG-150 is a highly reliable POS Terminal with the performance of Intel® Celeron® (Bay Trail) processors. Perfect for empowering your business with high performance and sophistication.



Power, Storage and LAN LED status indicate



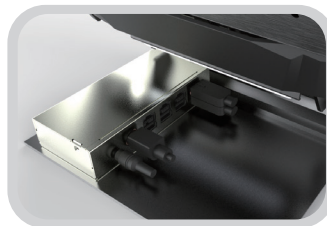
15" Bezel-Free PCAP Touch



POS Terminal used as standalone 10.1" w/Touch and 15" 2nd display



10.1" 2nd display and VFD supported



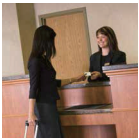
Support 12V / 24V PoweredUSB output



Kitchen Display System (KDS) application

Specifications (1/2)

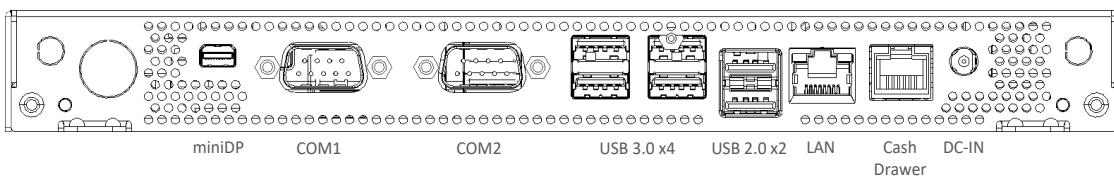
Model Name	DG-150	
Main Board	Main Board Name	X7CE
	CPU	Intel® Bay Trail-Mobile/Desktop SoC Processor: Celeron® J1900 (4 cores, up to 2.42 GHz, max TDP 10 Watt)
	Chipset	Intel® HD Graphics
	System Memory	SO-DIMM DDR3L x 1 1067/1333MHz, Max. 8GB
	Thermal Solution	Fanless
	BIOS	Phoenix uEFI BIOS
	OS	Windows 7, WES 7, POSReady 7 Windows 8, Windows Embedded 8 Standard/Industry Retail WIN 10
	Display	LCD size
Brightness		400nits
Resolution		1024 x 768
Panel backlight type		LED
Touch Screen		P-cap
Storage Device	Interface	SATA x 2 (3.0Gb/S)
	HDD / SSD	2.5" SATA HDD / SSD x 1 M.2 2242 SSD Slot x 1
I/O Ports	COM	COM 1 : DB9 RS232 x 1 (RI / 5V / 12V by BIOS selection) COM 2 : DB9 RS232 x 1 (RI / 5V / 12V by BIOS selection)
	USB	USB 3.0 x 4 USB 2.0 x 2
	LAN	Gigabit Ethernet by RJ-45 x 1, support Wake on LAN
	Cash Drawer	RJ12 x 1, support 12V / 24V DC cash drawer
	Audio	2 Watt Speaker x 1 (R Channel)
	Video	Mini DisplayPort x 1
	DC-in	19VDC input, 2pins jack x 1
	Power Button	Power button x 1
Internal Connector	COM	COM 3: RS232 pin-header x 1 (no power, Option) COM 4: RS232 pin-header x 1 (no power, Option) COM 6: RS232 pin-header x 1 (5V for VFD)
	SATA	SATA connector (NB type) x 1
	50pin pin-header	50 pin-header x 1 (EDP, COM6 (12V,VFD), USB2.0*3, Power Switch and LED)
	Audio	Pin Header for Speaker x 1
	Battery	Pin Header x 1
	Cash Drawer Power	Pin header 12V/24V
	Power Switch and LED	Pin Header
	Others	Expansion Slot
Communication		Wireless LAN module, M.2 2230 E-key (Optional)
Wall mount		Option VESA mounting bracket
Power Supply		External adapter, 19V DC input, 65Watt
Colour		Black / White
Material		Plastic / Aluminium
EMC & Safety Compliance		CE / FCC / VCCI / CB / WEEE / RoHS
Dimension (W x D x H)		36 x 18.9 x 29 cm (14.2 x 7.5 x 11.4 inch)
Weight	4.5 kg	



Specifications (2/2)

Model Name	DG-150	
Environmental	Operating Temperature	0 to 40°C
	Storage Temperature	-20~ 60°C
	Humidity	20% to 85% RH (non condensing)

I/O Interface



Ordering information

Main Unit

Part No.	Description
DG-150 , X7CE-1900	Bay Trail POS Terminal w/ 15" TFT LCD Intel® Celeron® J1900 2.42GHz, Black

Dimensions (cm / inch)

